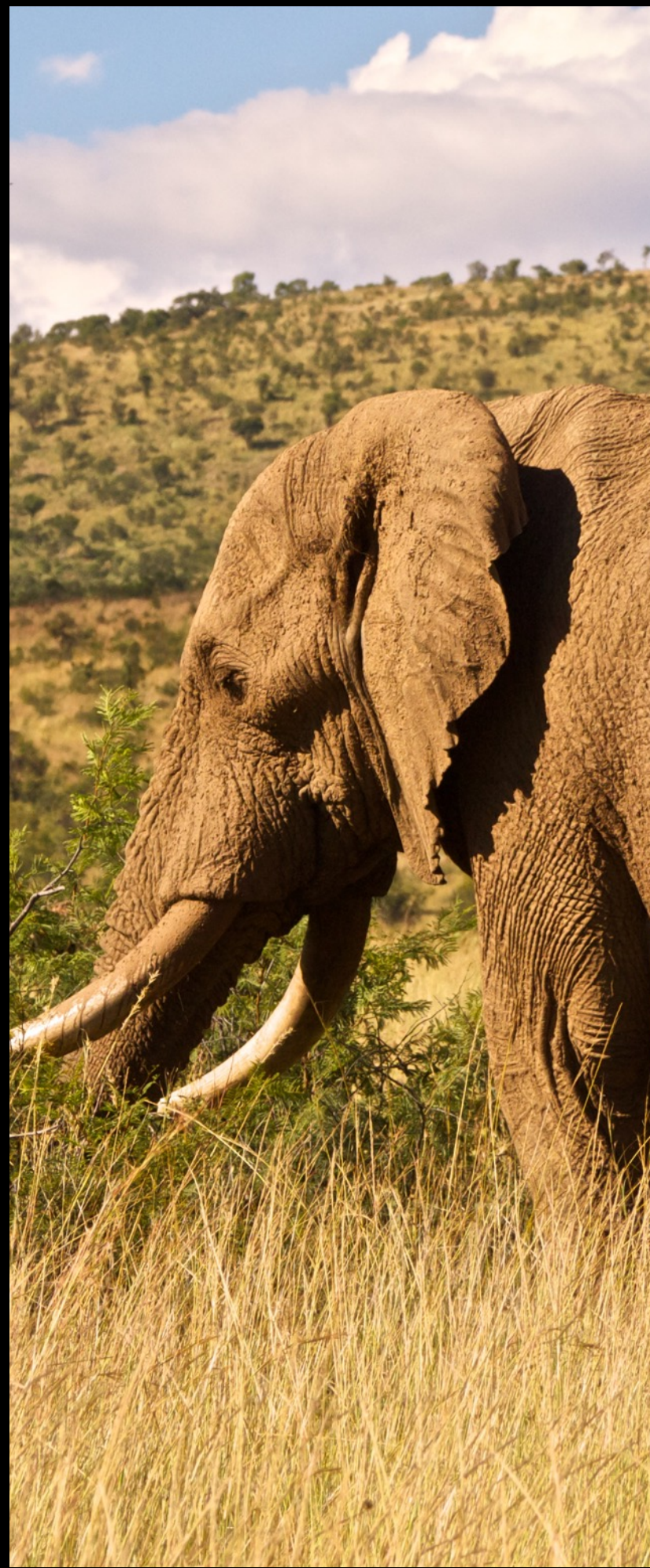
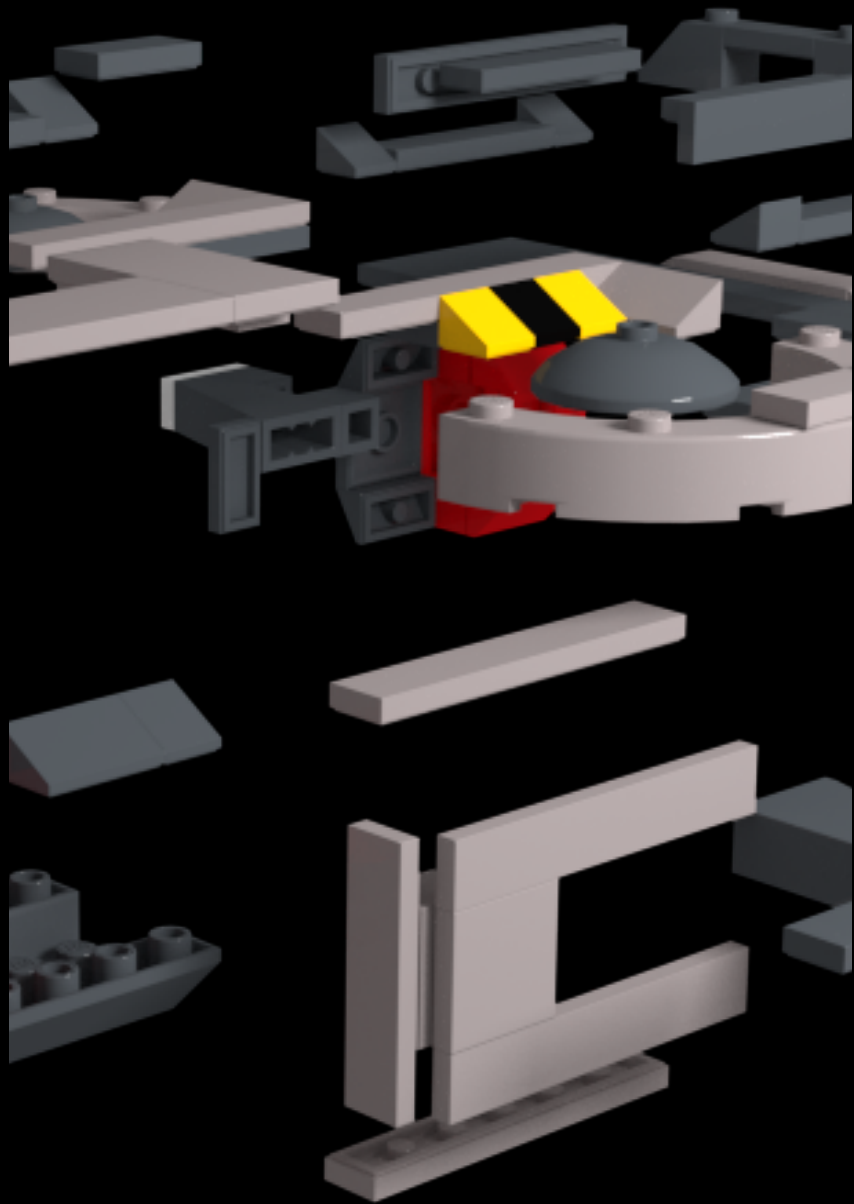


What's Next? Beyond the Learning Management System Some Personal Reflections

**Apereo Europe / ESUP Days 21
February 2nd 2016**

ian.dolphin@apereo.org

Some Help ...



Lego...

**...the Flying Car of
Educational Technology**



**Components that just “snap together”.
More flexible environments.**

What about the Groundhog?
(the clue is in the date...)



**For 20 years I've woken up to hear
more flexible environments
were about to happen**

**Is something different happening
this time?**

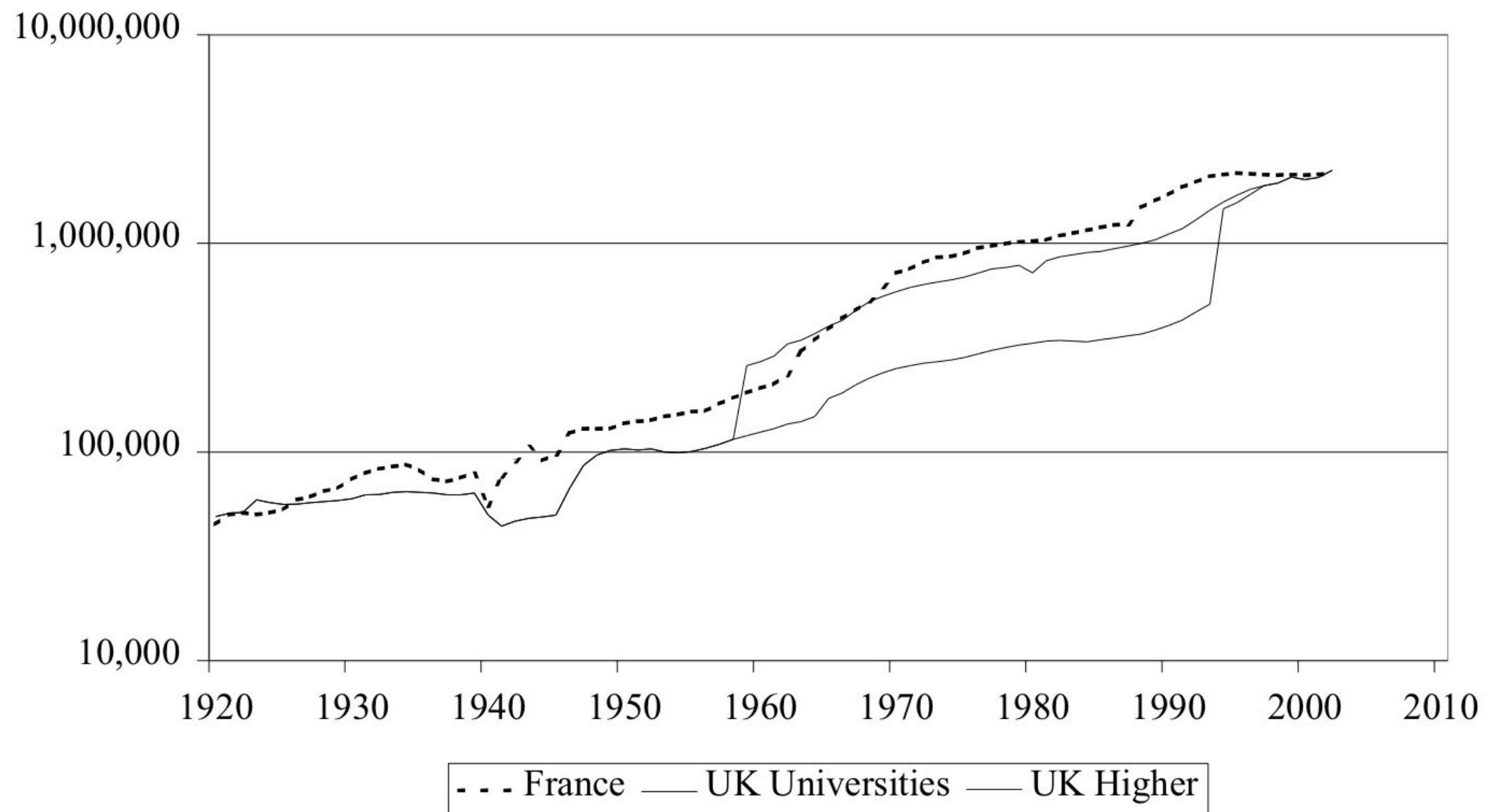


Only one perspective. There are many.

So why the repeated promise?

Controversy: Massification and Austerity

Figure 2 – Number of students in higher education, 1920-2002



**Policy pressure:
Do more with less**

**Sense that the LMS is rather
better at administration
than enabling learning**

Outliers of change: The Blogosphere

← Alternate Ledges for CUNY Study on Raising
Graduation Rates

Blueprint for a Post-LMS, Part 1

Posted on March 4, 2015 by [Michael Feldstein](#)



By [Michael Feldstein](#)

[Blueprint for a Post-LMS, Part 2](#) →

[Tools](#) ▾

[Pedagogical Approaches](#)

[Blog](#) ▾

[Contact us](#)

Beyond LMS

Beyond LMS

Learning Beyond the LMS

HACK
EDU

Beyond the LMS



Audrey Watters on 05 Sep 2014

Reading Phil's [m](#)
implications that
progression of le
approach in mir
important of wh
general LMSs a
LMS design ar
pretending tha
when they are
know what a
is better for C
pedagogy is
software and
own hardwa
platform d

The L
LMS
work
Bec
coh
ind
the
cov
Th
LM
th
th
ic
c
s
I

Here are the notes and the slides from my talk today at Newcastle University. Thanks to everyone at NUTELA, particularly Suzanne Hardy, for sponsoring my trip up north.

Mainstreaming the conversation
Educause Learning Initiative (ELI)

Next Generation Digital Learning
Environment

EDUCAUSE

LEARNING
INITIATIVE

The Next Generation Digital Learning Environment

A Report on Research

Malcolm Brown, EDUCAUSE Learning Initiative

Joanne Dehoney, EDUCAUSE

Nancy Millichap, Next Generation Learning Challenges

Note LMS Success

- **99% US Institutions have at least 1 LMS**
- **85% of Faculty use it**
- **74% say it is a useful tool**
- **83% of students use it**
- **41% Faculty - promote out of classroom activity**
- **15% of institutions plan to change it in 3 yrs**

Why the challenge?

- LMS is “early concept” web
- Course-centred
- Teacher-centred
- Inflexible. Tends to be “one size fits all”

Replacement?

Key areas from the Educause panel discussion

- **Interoperability as a key enabler**
- **Analytics, assessment and advising**
(LMS largest source of analytics data)
- **Personalisation**
- **Accessibility (not as an add-on, but designed in)**
- **Different forms of collaboration - not simply “courses”**

Talking points ...

- Customisation **in addition** to personalisation
- Collaboration largely seen **within an institution**
- Comment: “Might keep LMS - as part of larger environment”

**Desire for change is growing.
What do we need to realise it?**

Dr Charles Severance

“Channeling @DrChuck”

We're getting better...

... at specs and standards

- IMS LTI, Common Cartridge, Common Cartridge/ePub collaboration, Caliper**
- LTI Content Item**
- (My own addition) - xAPI**

IMS LTI Content Item

- **Relatively short specification**
- **Relatively easy to implement**
- **More details at <http://tinyurl.com/hfkv7j8>
(Youtube Sakai Virtual Conference keynote)**
- **One impact: App Store Interoperability**
- **Why is this important?**

**Easy customisation by -
educator?**

institution?

learner?

Implications?

**Smaller, scaleable and flexible
environments.**

Yes, it's back ...



Coda from Dr Chuck:

**“The Cloud isn’t the answer
to all things”**

European data protection perspectives

What's Missing?

Step out of the silos

- Learning and teaching, or **holistic view of academic practice**. What about research?
 - “Research informed teaching” anyone?
- What is **learning technology**?
 - Library and electronic resource integration
 - Learning analytics data implications

Connectedness

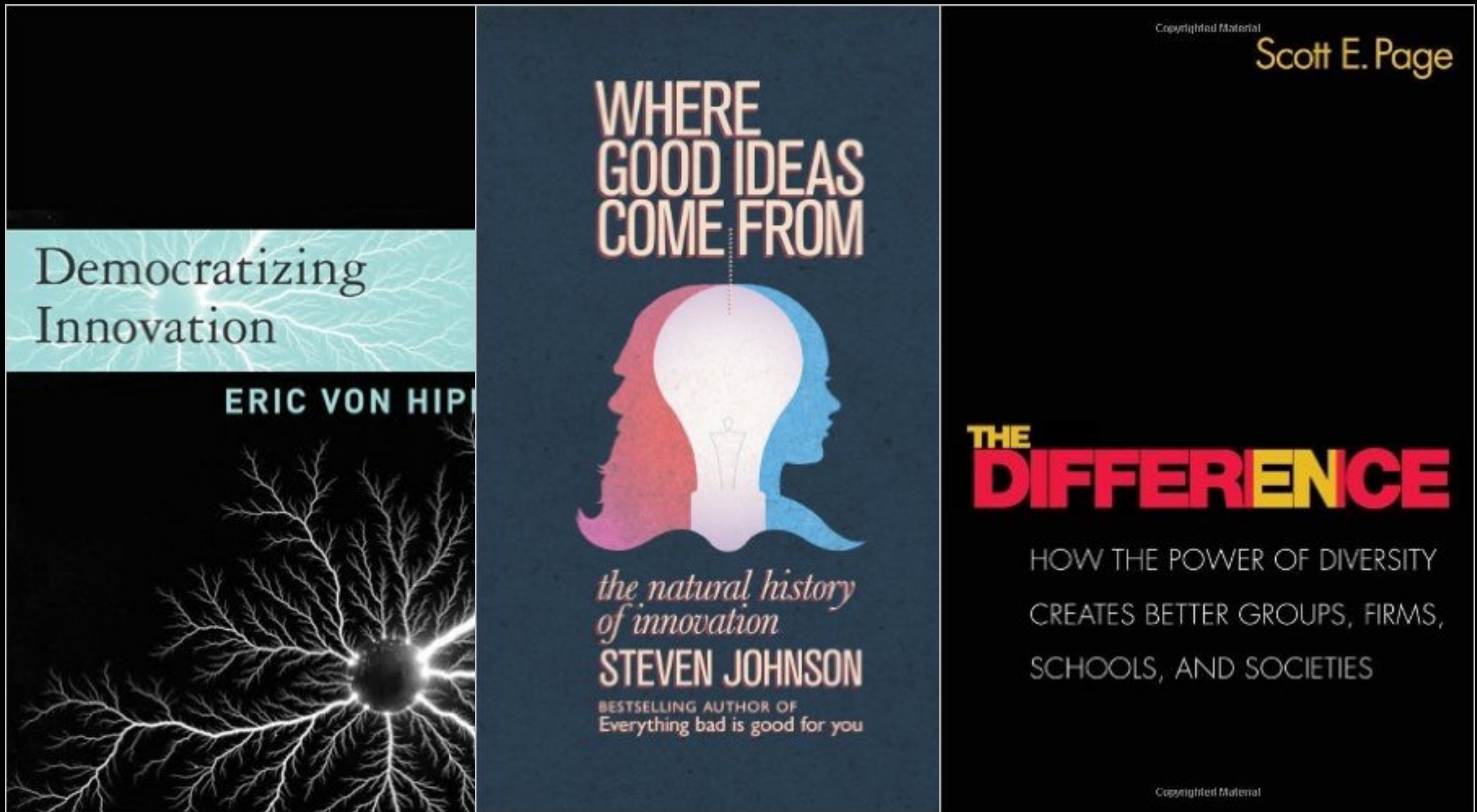
- **Collaboration goes beyond the institution**
 - **Interinstitutional, interdisciplinary**
- **An example - OAE and Access Management**

Critical Role of Open Source

- **Keeping market honest. An alternative.**
- **Interoperability: demonstrators and reference models for open standards**
- **Will the commercial-proprietary vendors unlock their environments?**
 - **History of LTI**

Community sustains open source

Diverse communities innovate...



We are not building a suite

Sakai - widely used as an LMS + research support

OAE - flexible collaboration environment

Xerte - authoring accessible and interactive content

Opencast - Capture, management & distribution of av media

UPortal/UMobile - personalised and customised gateway

POET - strengthening Moodle plugins

Karuta - Next generation eportfolio

Open Analytics Platform - flexible, works with multiple LMS's, not tied to an application

And a bunch of other "under the hood" components

We are not building a suite

Help us build that community

ian.dolphin@apereo.org